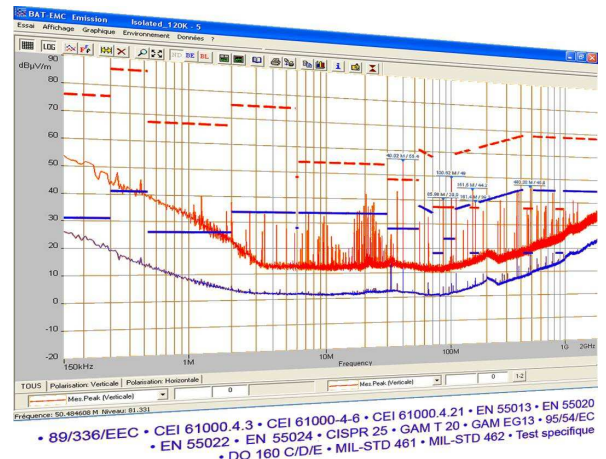


BAT-EMC meets automation needs for susceptibility and emission tests.

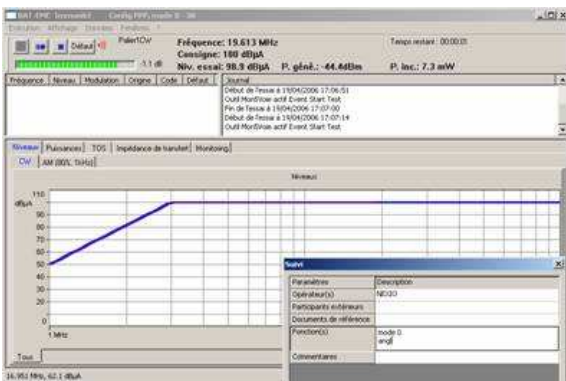
BAT-EMC has been developed since 1995 by a team ensuring expert design, development and technical support.

Fully independent from any measuring devices or systems manufacturers, **BAT-EMC** manages both original and future configured instruments.



EMC TESTS MODULES

- Radiated & Conducted Emission
- Radiated, Conducted, Magnetic Susceptibility
- Reverberant Chamber Susceptibility
- EN55020
- CS116
- Transient
- Radiation patterns
- Radio measurement (ETSI 300xxx)



FEATURES

- Measuring device management
- Automatic report maker
- Attenuation, transfer curves, amplified harmonics measurements
- Graphical analysis & post-treatment
- EUT Control&Monitoring (generic or specific tools)

PRODUCT LINES

Complete & Modular

EMC

BAT-EMC : Emission, Susceptibility, Reverberant chamber, Transient, EN55020, Radiation Pattern, Radio measurement, ...

Control & Monitoring

BAT-Image : Automatic EUT video surveillance (real time analysis & detection)

BAT-I/O : Control of numerical signal sequences through acquisition card (until 128 simultaneous line)

EASY-Monitoring: Plug&Play EUT control tool through NI USB module (10 numerical I/O; 12 digital I/O and 1 trigger)

AT-DIAG : Management of on-board calculators communication protocols (CAN, KP2000, ISO8,...)

On Site Measurements

BAT-MIS : Health measurements following french ANFR protocol v2.1

BAT-RSM: Radio-monitoring on Telecom network (occupation rate, survey, average noise,...)

KEY POINTS

- **Unique** User Interface for all tests
- **Open** for standard evolutions and specific needs
- **Compliant** with Quality Requirements
- Efficient **Technical support**
- **Software Interface** compatible with MS Office™, Agilent VEE™, LabView™, LabWindows CVI™...

BAT-EMC is designed by

DOMAINS

More than 300 **BAT-EMC** licences installed in France and abroad in every domain concerned by EMC :

- AEROSPACE . AUTOMOTIVE .
- AVIONIC . CIVIL INDUSTRY .
- DEFENSE . PRIVATE EMC LAB .
- MEDICAL . TELECOM . RAILWAY .